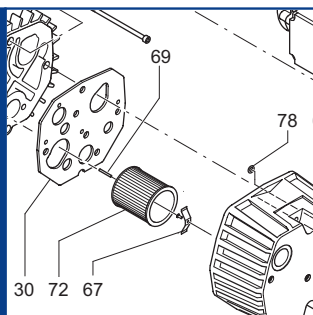


VT 4.10
VT 4.16



SERVICE

BECKER
D-42279 Wuppertal
www.becker-international.com

year XXXX

No. (-) **VT 4.10-XX** Index Variante

type	VT 4.10-XX
frequency	XXXX Hz
speed	XXXX min ⁻¹
power required	XXXX kW
inlet capacity	XXXX m ³ /h
pressure +	XXXX mbar
vacuum -	XXXX mbar

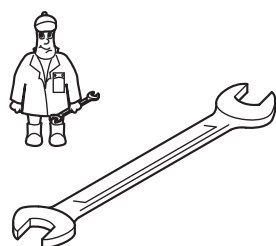
Made in Germany



Ersatzteilliste
Spare parts list
Liste de pièces de rechange
Listino pezzi di ricambio
Lista de piezas de recambio
Lista de peças sobresselentes
Reserveonderdelenlijst
Atsarginių dalių sąrašas
Varuosad nimekirja
Rezerves daļu saraksts

Reservedelsliste
Reservdelslista
Varaosuettelo
Reservedelsliste
Wykaz części zamiennych
Tartalékalkatrész lista
Seznam náhradních dílů
Seznam nadomestnih delov
Zoznam náhradných dielov
Rezervni dijelovi popis

Lista pieselor de schimb
Páirteanna spártha liosta
Κατάλογος ανταλλακτικών
Yedek parça listesi
Списък на резервните части
Перечень запасных частей
スペアパーツリスト
예비 부품 목록
备用零件目录



Pos.	Menge ²⁾ Quantity Quantité Quantità Cantidad	Bestell-Nr. Ident No. No. Identification No. Identificazione No. de pedido	Bezeichnung Description Designation Designazione Descripción
VT 4.10			
24	SATZ/KIT	901327 00007	Schieber, Rotor Vane, Palette, Empujador
72	1	909518 00000	Filterpatrone, Filter cartridge, Cartouche Filtrante, Cartuccia filtro, Cartucho de filtro
VT 4.16			
24	SATZ/KIT	901347 00007	Schieber, Rotor Vane, Palette, Empujador
72	1	909519 00000	Filterpatrone, Filter cartridge, Cartouche Filtrante, Cartuccia filtro, Cartucho de filtro

²⁾ erforderliche Bestellmenge / necessary order quantity / quantité nécessaire / quantità di ordinazione necessari / cantidad necesario

Wartung
Maintenance
Entretien
Manutenzione
Mantenimiento



VT 4.10
VT 4.16

Standard



Variante



VT 4.10/XX

①

- 1~ Einphasenwechselstrom
- 1~ single-phase AC
- 1~ AC monophasé
- 1~ AC monofase
- 1~ AC monofásica

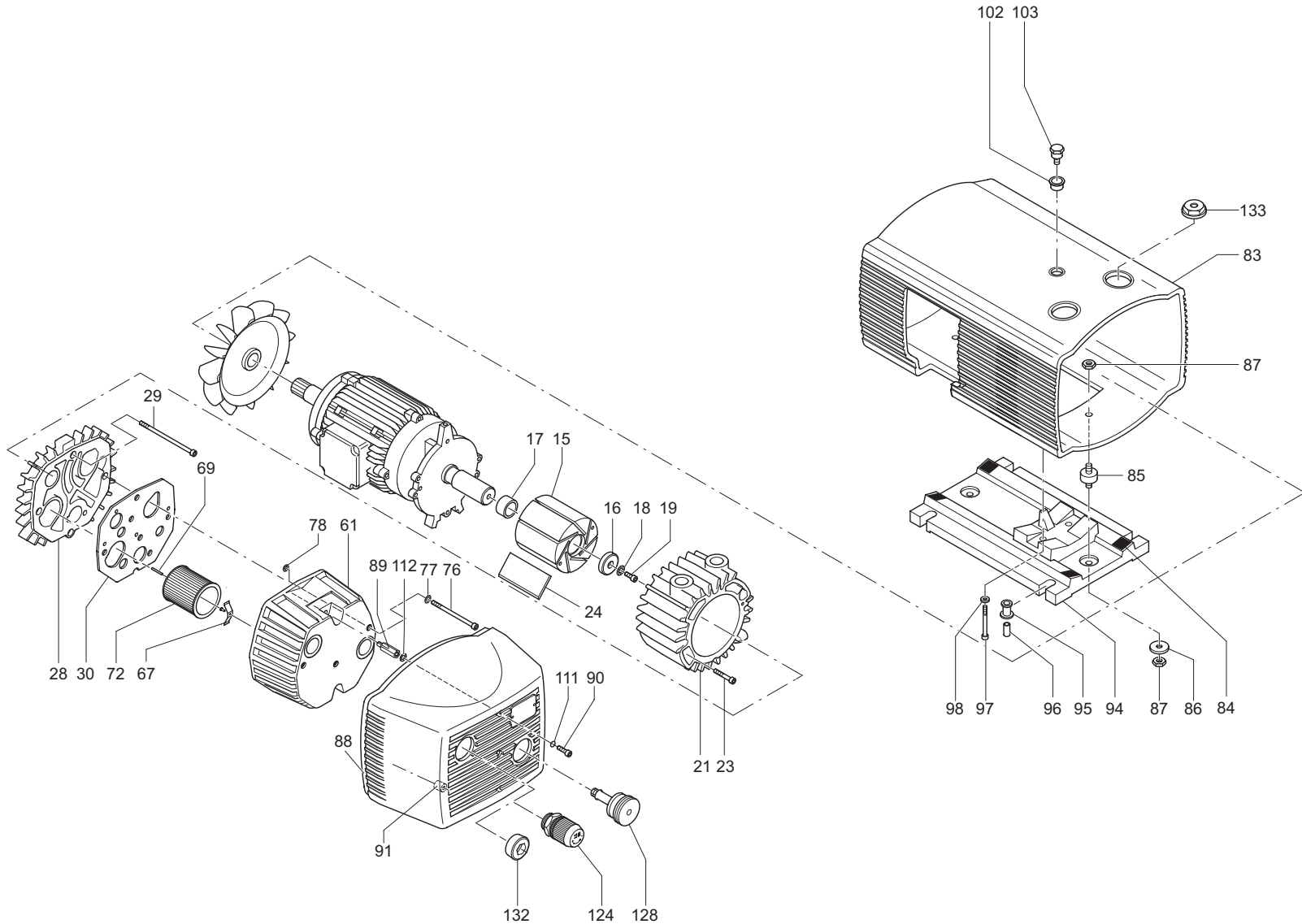
VT 4.16/XX

②

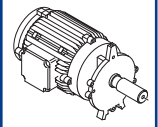
- 1~ Einphasenwechselstrom
- 1~ single-phase AC
- 1~ AC monophasé
- 1~ AC monofase
- 1~ AC monofásica

③

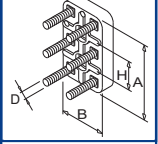
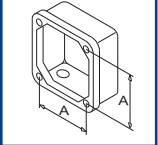
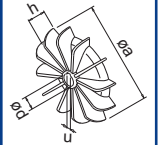
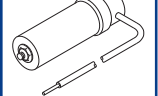
- /O-34
- 1~ mit erhöhter Volumenstrom
- 1~ with increased volume flow rate
- 1~ avec débit volume augmentée
- 1~ con flusso in volume aumentata
- 1~ con flusso in volume aumentata




SERVICE ?




C = ? μ F
U = ? V




- INDEX	Pos.	Bestell Nr.	Beschreibung	
VT 4.10	15	020000 16200	KOLBEN	
	16	016800 05000	SPANNSCHEIBE	
	17	911001 00000	STAR-TOLERANZRING	
	18	949203 00000	ZAHNSCHEIBE	
	19	945320 00000	INNENSECHSKANTSCHRAUBE	
	21	000100 16200	GEHÄUSE	
	23	945319 00000	INNENSECHSKANTSCHRAUBE	
	24	901327 00007	SCHIEBER-KOHL E (SATZ)	
	28	000700 16200	SEITENDECKEL	
	29	945364 00000	INNENSECHSKANTSCHRAUBE	
	30	008901 16200	DICHTUNG	
	61	004800 27300	FILTERDECKEL	
	67	009000 16300	ANPRESSFEDER	
69	952009 00000	SPANNHÜLSE		
72	909518 00000	FILTERPATRONE (1x) ¹⁾		
76	945364 00000	INNENSECHSKANTSCHRAUBE		
77	948021 00000	DICHTRING		
78	913161 00000	O-RING		
83	006800 27300	GERÄTEHAUBE		
84	060901 16300	DÄMPFUNGSTREIFEN		
85	741310 50000	GUMMIPUFFER		
86	949402 00000	UNTERLEGSCHIEBE		
87	947001 00000	SECHSKANTMUTTER		
88	006801 27300	FRONTHAUBE		
89	068000 27300	DISTANZSTÜCK		
90	945320 00000	INNENSECHSKANTSCHRAUBE		
91	951922 00000	GUMMIFORMTEIL		
94	015100 27300	MOTORFUSS		
95	951921 00000	GUMMIFORMTEIL		
96	068000 27600	DISTANZSTÜCK		
97	945363 00000	INNENSECHSKANTSCHRAUBE		
98	949451 00000	UNTERLEGSCHIEBE		
102	968104 00000	GUMMI-DISTANZSTÜCK		
103	029600 16300	BOLZEN		
111	913161 00000	O-RING		
112	741300 27600	GUMMISCHEIBE		
124	736001 99613	VAKUUMREGULIERVENTIL		
128	727502 06000	ABBLASEVENTIL		
132	951232 00000	VERSCHLUSS-SCHRAUBE		
133	951224 00000	VERSCHLUSS-SCHRAUBE		


¹⁾erforderliche Bestellmenge / Wartung

- INDEX	Pos.	Bestell Nr.	Beschreibung	
VT 4.16	15	020000 16300	KOLBEN	
	16	016800 16300	SPANNSCHEIBE	
	17	911009 00000	STAR-TOLERANZRING	
	18	949203 00000	ZAHNSCHEIBE	
	19	945320 00000	INNENSECHSKANTSCHRAUBE	
	21	000105 16300	GEHÄUSE	
	23	945321 00000	INNENSECHSKANTSCHRAUBE	
	24	901347 00007	SCHIEBER-KOHL E (SATZ)	
	28	000705 16300	SEITENDECKEL	
	29	945372 00000	INNENSECHSKANTSCHRAUBE	
	30	008901 16300	DICHTUNG	
	61	004800 27400	FILTERDECKEL	
	67	009000 16300	ANPRESSFEDER	
69	952009 00000	SPANNHÜLSE		
72	909519 00000	FILTERPATRONE (1x) ¹⁾		
76	945325 00000	INNENSECHSKANTSCHRAUBE		
77	948021 00000	DICHTRING		
78	913161 00000	O-RING		
83	006800 27400	GERÄTEHAUBE		
84	060901 16300	DÄMPFUNGSTREIFEN		
85	741310 50000	GUMMIPUFFER		
86	949402 00000	UNTERLEGSCHIEBE		
87	947001 00000	SECHSKANTMUTTER		
88	006801 27400	FRONTHAUBE		
89	068000 27300	DISTANZSTÜCK		
90	945320 00000	INNENSECHSKANTSCHRAUBE		
91	951922 00000	GUMMIFORMTEIL		
94	015100 27400	MOTORFUSS		
95	951921 00000	GUMMIFORMTEIL		
96	068000 27600	DISTANZSTÜCK		
97	945323 00000	INNENSECHSKANTSCHRAUBE		
98	949451 00000	UNTERLEGSCHIEBE		
102	968104 00000	GUMMI-DISTANZSTÜCK		
103	029600 16300	BOLZEN		
111	913161 00000	O-RING		
112	741300 27600	GUMMISCHEIBE		
124	736001 99613	VAKUUMREGULIERVENTIL		
128	727502 06000	ABBLASEVENTIL		
132	951232 00000	VERSCHLUSS-SCHRAUBE		
133	951224 00000	VERSCHLUSS-SCHRAUBE		

¹⁾erforderliche Bestellmenge / Wartung

- INDEX	Pos.	Ident No.	Description	
VT 4.10	15	020000 16200	ROTOR	
	16	016800 05000	CLAMPING DISC	
	17	911001 00000	STAR-TOLERANCE-RING	
	18	949203 00000	TOOTHED SPRING WASHER	
	19	945320 00000	SOCKET HEAD SCREW	
	21	000100 16200	PUMP BODY	
	23	945319 00000	SOCKET HEAD SCREW	
	24	901327 00007	CARBON VANES (KIT)	
	28	000700 16200	LID	
	29	945364 00000	SOCKET HEAD SCREW	
	30	008901 16200	GASKET	
	61	004800 27300	FILTER COVER	
	67	009000 16300	BLADE SPRING	
69	952009 00000	LOCATING PIN		
72	909518 00000	FILTER CARTRIDGE (1x)¹⁾		
76	945364 00000	SOCKET HEAD SCREW		
77	948021 00000	SEALING RING		
78	913161 00000	O-RING		
83	006800 27300	PROTECTING HOOD		
84	060901 16300	ELASTIC PAD		
85	741310 50000	RUBBER BUFFER		
86	949402 00000	WASHER		
87	947001 00000	HEX.NUT		
88	006801 27300	PROTECTING HOOD (FRONT)		
89	068000 27300	SPACER		
90	945320 00000	SOCKET HEAD SCREW		
91	951922 00000	RUBBER ELEMENT		
94	015100 27300	FOOT		
95	951921 00000	RUBBER ELEMENT		
96	068000 27600	SPACING COLLAR		
97	945363 00000	SOCKET HEAD SCREW		
98	949451 00000	WASHER		
102	968104 00000	RUBBER SLEEVE		
103	029600 16300	BOLT		
111	913161 00000	O-RING		
112	741300 27600	RUBBER DISC		
124	736001 99613	VACUUM REGULATING VALVE		
128	727502 06000	BLOW-OFF VALVE		
132	951232 00000	SCREW PLUG		
133	951224 00000	SCREW PLUG		

¹⁾ necessary order quantity / maintenance

- INDEX	Pos.	Ident No.	Description	
VT 4.16	15	020000 16300	ROTOR	
	16	016800 16300	CLAMPING DISC	
	17	911009 00000	STAR-TOLERANCE-RING	
	18	949203 00000	TOOTHED SPRING WASHER	
	19	945320 00000	SOCKET HEAD SCREW	
	21	000105 16300	PUMP BODY	
	23	945321 00000	SOCKET HEAD SCREW	
	24	901347 00007	CARBON VANES (KIT)	
	28	000705 16300	LID	
	29	945372 00000	SOCKET HEAD SCREW	
	30	008901 16300	GASKET	
	61	004800 27400	FILTER COVER	
	67	009000 16300	BLADE SPRING	
69	952009 00000	LOCATING PIN		
72	909519 00000	FILTER CARTRIDGE (1x)¹⁾		
76	945325 00000	SOCKET HEAD SCREW		
77	948021 00000	SEALING RING		
78	913161 00000	O-RING		
83	006800 27400	PROTECTING HOOD		
84	060901 16300	ELASTIC PAD		
85	741310 50000	RUBBER BUFFER		
86	949402 00000	WASHER		
87	947001 00000	HEX.NUT		
88	006801 27400	PROTECTING HOOD (FRONT)		
89	068000 27300	SPACER		
90	945320 00000	SOCKET HEAD SCREW		
91	951922 00000	RUBBER ELEMENT		
94	015100 27400	FOOT		
95	951921 00000	RUBBER ELEMENT		
96	068000 27600	SPACING COLLAR		
97	945323 00000	SOCKET HEAD SCREW		
98	949451 00000	WASHER		
102	968104 00000	RUBBER SLEEVE		
103	029600 16300	BOLT		
111	913161 00000	O-RING		
112	741300 27600	RUBBER DISC		
124	736001 99613	VACUUM REGULATING VALVE		
128	727502 06000	BLOW-OFF VALVE		
132	951232 00000	SCREW PLUG		
133	951224 00000	SCREW PLUG		


¹⁾ necessary order quantity / maintenance

- INDICE	Pos.	No. Identification	Designation	FR	
VT 4.10	15	020000 16200	PISTON		
	16	016800 05000	DISQUE DE SERRAGE		
	17	911001 00000	BAGUE STAR		
	18	949203 00000	DENT DISQUE		
	19	945320 00000	VIS HEXAGONALE INTERNE		
	21	000100 16200	CORP DE POMPE		
	23	945319 00000	VIS HEXAGONALE INTERNE		
	24	901327 00007	PALETTE DE CHARBON (KIT)		
	28	000700 16200	COUVERCLE		
	29	945364 00000	VIS HEXAGONALE INTERNE		
	30	008901 16200	JOINT		
	61	004800 27300	COUVERCLE DU FILTRE		
	67	009000 16300	RESSORT-JAME		
69	952009 00000	DOVILLE DE ETRAGE			
72	909518 00000	CARTOUCHE FILTRANTE (1x) ¹⁾			
76	945364 00000	VIS HEXAGONALE INTERNE			
77	948021 00000	JOINT			
78	913161 00000	ANNEAU-O			
83	006800 27300	CARTER PROTECTEUR			
84	060901 16300	AMORTISSEUR			
85	741310 50000	AMORTISSEUR EN CAOUTCHOUC			
86	949402 00000	RONDELLE			
87	947001 00000	ECROU A 6PANS			
88	006801 27300	CARTER PROTECTEUR			
89	068000 27300	ENTRETOISE			
90	945320 00000	VIS HEXAGONALE INTERNE			
91	951922 00000	ELEMENT EN CAOUTCHOUC			
94	015100 27300	PIED			
95	951921 00000	ELEMENT EN CAOUTCHOUC			
96	068000 27600	DONILLE D'ECARMENT			
97	945363 00000	VIS HEXAGONALE INTERNE			
98	949451 00000	RONDELLE			
102	968104 00000	PIECE D'ECARTEMENT CAOUTCHOUC			
103	029600 16300	BOULON			
111	913161 00000	ANNEAU-O			
112	741300 27600	RONDELLE DE CAOUTCHOUC			
124	736001 99613	SOUPAPE REGLAGE VIDE			
128	727502 06000	SILENCIEUX			
132	951232 00000	BOUCHON			
133	951224 00000	BOUCHON			


¹⁾ quantité nécessaire / entretien

- INDICE	Pos.	No. Identification	Designation	FR	
VT 4.16	15	020000 16300	PISTON		
	16	016800 16300	DISQUE DE SERRAGE		
	17	911009 00000	BAGUE STAR		
	18	949203 00000	DENT DISQUE		
	19	945320 00000	VIS HEXAGONALE INTERNE		
	21	000105 16300	CORP DE POMPE		
	23	945321 00000	VIS HEXAGONALE INTERNE		
	24	901347 00007	PALETTE DE CHARBON (KIT)		
	28	000705 16300	COUVERCLE		
	29	945372 00000	VIS HEXAGONALE INTERNE		
	30	008901 16300	JOINT		
	61	004800 27400	COUVERCLE DU FILTRE		
	67	009000 16300	RESSORT-JAME		
69	952009 00000	DOVILLE DE ETRAGE			
72	909519 00000	CARTOUCHE FILTRANTE (1x) ¹⁾			
76	945325 00000	VIS HEXAGONALE INTERNE			
77	948021 00000	JOINT			
78	913161 00000	ANNEAU-O			
83	006800 27400	CARTER PROTECTEUR			
84	060901 16300	AMORTISSEUR			
85	741310 50000	AMORTISSEUR EN CAOUTCHOUC			
86	949402 00000	RONDELLE			
87	947001 00000	ECROU A 6PANS			
88	006801 27400	CARTER PROTECTEUR			
89	068000 27300	ENTRETOISE			
90	945320 00000	VIS HEXAGONALE INTERNE			
91	951922 00000	ELEMENT EN CAOUTCHOUC			
94	015100 27400	PIED			
95	951921 00000	ELEMENT EN CAOUTCHOUC			
96	068000 27600	DONILLE D'ECARMENT			
97	945323 00000	VIS HEXAGONALE INTERNE			
98	949451 00000	RONDELLE			
102	968104 00000	PIECE D'ECARTEMENT CAOUTCHOUC			
103	029600 16300	BOULON			
111	913161 00000	ANNEAU-O			
112	741300 27600	RONDELLE DE CAOUTCHOUC			
124	736001 99613	SOUPAPE REGLAGE VIDE			
128	727502 06000	SILENCIEUX			
132	951232 00000	BOUCHON			
133	951224 00000	BOUCHON			

¹⁾ quantité nécessaire / entretien

I INDICE	Pos.	No. Identificazione	Designazione		
VT 4.10	15	020000 16200	ROTORE		
	16	016800 05000	DISCO DI FISSAGGIO		
	17	911001 00000	STAR-ANELLO TOLLERANZA		
	18	949203 00000	DISCO A DENTE		
	19	945320 00000	VITE ESAGONALE INTERNA		
	21	000100 16200	CARCASSA		
	23	945319 00000	VITE ESAGONALE INTERNA		
	24	901327 00007	PALETTE DI CHARBONE (KIT)		
	28	000700 16200	COPERCHIO		
	29	945364 00000	VITE ESAGONALE INTERNA		
	30	008901 16200	GUARNIZIONE		
	61	004800 27300	COPERCHIO FILTRO		
	67	009000 16300	MOLLA		
69	952009 00000	SPINE DI RISCONTRO			
72	909518 00000	CARTUCCIA FILTRO (1x)¹⁾			
76	945364 00000	VITE ESAGONALE INTERNA			
77	948021 00000	ANELLO GUARNIZIONE			
78	913161 00000	ANELLO-O			
83	006800 27300	CAPOTO DI PROTEZIONE			
84	060901 16300	AMORTIZZATORE			
85	741310 50000	AMMORTIZZATORE IN GOMMA			
86	949402 00000	RONDELLA			
87	947001 00000	DADO ESAGONALE			
88	006801 27300	CARTER DI PROTEZIONE			
89	068000 27300	SPAZIATORE			
90	945320 00000	VITE ESAGONALE INTERNA			
91	951922 00000	ELEMENTO IN GOMMA			
94	015100 27300	PIEDE			
95	951921 00000	ELEMENTO IN GOMMA			
96	068000 27600	BOCCOLA DISTANZIATRICE			
97	945363 00000	VITE ESAGONALE INTERNA			
98	949451 00000	RONDELLA			
102	968104 00000	PEZZO DI SCOSTAM. IN GOMMA			
103	029600 16300	BULLONE			
111	913161 00000	ANELLO-O			
112	741300 27600	RONDELLA IN GOMMA			
124	736001 99613	VALVOLA REGOLAZIONE VUOTO			
128	727502 06000	SILENZIATORE			
132	951232 00000	VITE DI CHIUSURA			
133	951224 00000	VITE DI CHIUSURA			

¹⁾ quantità di ordinazione necessari / manutenzione

I INDICE	Pos.	No. Identificazione	Designazione		
VT 4.16	15	020000 16300	ROTORE		
	16	016800 16300	DISCO DI FISSAGGIO		
	17	911009 00000	STAR-ANELLO TOLLERANZA		
	18	949203 00000	DISCO A DENTE		
	19	945320 00000	VITE ESAGONALE INTERNA		
	21	000105 16300	CARCASSA		
	23	945321 00000	VITE ESAGONALE INTERNA		
	24	901347 00007	PALETTE DI CHARBONE (KIT)		
	28	000705 16300	COPERCHIO		
	29	945372 00000	VITE ESAGONALE INTERNA		
	30	008901 16300	GUARNIZIONE		
	61	004800 27400	COPERCHIO FILTRO		
	67	009000 16300	MOLLA		
69	952009 00000	SPINE DI RISCONTRO			
72	909519 00000	CARTUCCIA FILTRO (1x)¹⁾			
76	945325 00000	VITE ESAGONALE INTERNA			
77	948021 00000	ANELLO GUARNIZIONE			
78	913161 00000	ANELLO-O			
83	006800 27400	CAPOTO DI PROTEZIONE			
84	060901 16300	AMORTIZZATORE			
85	741310 50000	AMMORTIZZATORE IN GOMMA			
86	949402 00000	RONDELLA			
87	947001 00000	DADO ESAGONALE			
88	006801 27400	CARTER DI PROTEZIONE			
89	068000 27300	SPAZIATORE			
90	945320 00000	VITE ESAGONALE INTERNA			
91	951922 00000	ELEMENTO IN GOMMA			
94	015100 27400	PIEDE			
95	951921 00000	ELEMENTO IN GOMMA			
96	068000 27600	BOCCOLA DISTANZIATRICE			
97	945323 00000	VITE ESAGONALE INTERNA			
98	949451 00000	RONDELLA			
102	968104 00000	PEZZO DI SCOSTAM. IN GOMMA			
103	029600 16300	BULLONE			
111	913161 00000	ANELLO-O			
112	741300 27600	RONDELLA IN GOMMA			
124	736001 99613	VALVOLA REGOLAZIONE VUOTO			
128	727502 06000	SILENZIATORE			
132	951232 00000	VITE DI CHIUSURA			
133	951224 00000	VITE DI CHIUSURA			








¹⁾ quantità di ordinazione necessari / manutenzione

I ÍNDICE	Pos.	No. De pedido	Descripción	
VT 4.10	15	020000 16200	ÉMBOLO	
	16	016800 05000	ARANDELA TENSORA	
	17	911001 00000	ANILLO DE TOLERANCIA STAR	
	18	949203 00000	POLEA DENTADA	
	19	945320 00000	TORNILLO HEXAGONAL INTERIOR	
	21	000100 16200	CARCASA	
	23	945319 00000	TORNILLO HEXAGONAL INTERIOR	
	24	901327 00007	EMPUJADOR DE CARBÓN (KIT)	
	28	000700 16200	TAPA LATERAL	
	29	945364 00000	TORNILLO HEXAGONAL INTERIOR	
	30	008901 16200	JUNTA	
	61	004800 27300	TAPA DE FILTRO	
	67	009000 16300	MUELLE DE PRESIÓN	
69	952009 00000	CASQUILLO TENSOR		
72	909518 00000	CARTUCHO DE FILTRO (1x)¹⁾		
76	945364 00000	TORNILLO HEXAGONAL INTERIOR		
77	948021 00000	ANILLO DE JUNTA		
78	913161 00000	JUNTA TÓRICA		
83	006800 27300	CAPERUZA DE APARATO		
84	060901 16300	TIRAS DE AMORTIGUACIÓN		
85	741310 50000	AMORTIGUADOR DE GOMA		
86	949402 00000	ARANDELA		
87	947001 00000	TUERCA HEXAGONAL		
88	006801 27300	CAPERUZA FRONTAL		
89	068000 27300	PORTABOQUILLA		
90	945320 00000	TORNILLO HEXAGONAL INTERIOR		
91	951922 00000	PIEZA DE ORMA DE GOMA		
94	015100 27300	PIE DE MOTOR		
95	951921 00000	PIEZA DE ORMA DE GOMA		
96	068000 27600	PIEZA DISTANCIADORA		
97	945363 00000	TORNILLO HEXAGONAL INTERIOR		
98	949451 00000	ARANDELA		
102	968104 00000	PIEZA DE GOMA DISTANCIADORA		
103	029600 16300	BULÓN		
111	913161 00000	JUNTA TÓRICA		
112	741300 27600	ARANDELA DE GOMA		
124	736001 99613	VÁLVULA REGULADORA DE VACÍO		
128	727502 06000	VÁLVULA DE BARRIDO		
132	951232 00000	TORNILLO DE CIERRE		
133	951224 00000	TORNILLO DE CIERRE		

¹⁾ cantidad necesario / mantenimiento

I ÍNDICE	Pos.	No. De pedido	Descripción	
VT 4.16	15	020000 16300	ÉMBOLO	
	16	016800 16300	ARANDELA TENSORA	
	17	911009 00000	ANILLO DE TOLERANCIA STAR	
	18	949203 00000	POLEA DENTADA	
	19	945320 00000	TORNILLO HEXAGONAL INTERIOR	
	21	000105 16300	CARCASA	
	23	945321 00000	TORNILLO HEXAGONAL INTERIOR	
	24	901347 00007	EMPUJADOR DE CARBÓN (KIT)	
	28	000705 16300	TAPA LATERAL	
	29	945372 00000	TORNILLO HEXAGONAL INTERIOR	
	30	008901 16300	JUNTA	
	61	004800 27400	TAPA DE FILTRO	
	67	009000 16300	MUELLE DE PRESIÓN	
69	952009 00000	CASQUILLO TENSOR		
72	909519 00000	CARTUCHO DE FILTRO (1x)¹⁾		
76	945325 00000	TORNILLO HEXAGONAL INTERIOR		
77	948021 00000	ANILLO DE JUNTA		
78	913161 00000	JUNTA TÓRICA		
83	006800 27400	CAPERUZA DE APARATO		
84	060901 16300	TIRAS DE AMORTIGUACIÓN		
85	741310 50000	AMORTIGUADOR DE GOMA		
86	949402 00000	ARANDELA		
87	947001 00000	TUERCA HEXAGONAL		
88	006801 27400	CAPERUZA FRONTAL		
89	068000 27300	PORTABOQUILLA		
90	945320 00000	TORNILLO HEXAGONAL INTERIOR		
91	951922 00000	PIEZA DE ORMA DE GOMA		
94	015100 27400	PIE DE MOTOR		
95	951921 00000	PIEZA DE ORMA DE GOMA		
96	068000 27600	PIEZA DISTANCIADORA		
97	945323 00000	TORNILLO HEXAGONAL INTERIOR		
98	949451 00000	ARANDELA		
102	968104 00000	PIEZA DE GOMA DISTANCIADORA		
103	029600 16300	BULÓN		
111	913161 00000	JUNTA TÓRICA		
112	741300 27600	ARANDELA DE GOMA		
124	736001 99613	VÁLVULA REGULADORA DE VACÍO		
128	727502 06000	VÁLVULA DE BARRIDO		
132	951232 00000	TORNILLO DE CIERRE		
133	951224 00000	TORNILLO DE CIERRE		

¹⁾ cantidad necesario / mantenimiento

VT 4.10/XX VT 4.16/XX	Variante 	Pos. ²⁾	Bestell Nr. / Ident No. / No. Identification / No. Identificazione / No. De pedido		Beschreibung / Description / Designation / Designazione / Desripcion
			  	  	
VT 4.10					
① 1~ Einphasenwechselstrom 1~ single-phase AC 1~ AC monophasé 1~ AC monofase 1~ AC monofásica		5	964233 00000		WINKEL / BRACKET / SUPPORT / SUPPORTO / SOPORTE
		6	945204 00000		SECHSKANTSCHRAUBE / HEX-HEAD SCREW / VIS HEXAGONALE / VITE ESAGONALE / TORNILLO DE CABEZA HEXAGONAL
		7	947102 00000		MUTTER / NUT / ECROU / DADO / TUERCA
		8	742002 40000		KABEL / CABLE / CABLE / CAVO / CABLE
		82	006802 27300		HAUBE / PROTECTING HOOD / CARTER PROTECTEUR / CARTER DI PROTEZIONE / CAPERUZA
	83		006800 27300	HAUBE / PROTECTING HOOD / CARTER PROTECTEUR / CARTER DI PROTEZIONE / CAPERUZA	
VT 4.16					
② 1~ Einphasenwechselstrom 1~ single-phase AC 1~ AC monophasé 1~ AC monofase 1~ AC monofásica		5	964233 00000		WINKEL / BRACKET / SUPPORT / SUPPORTO / SOPORTE
		6	945204 00000		SECHSKANTSCHRAUBE / HEX-HEAD SCREW / VIS HEXAGONALE / VITE ESAGONALE / TORNILLO DE CABEZA HEXAGONAL
		7	947102 00000		MUTTER / NUT / ECROU / DADO / TUERCA
		8	742002 40000		KABEL / CABLE / CABLE / CAVO / CABLE
		82	006802 27400		HAUBE / PROTECTING HOOD / CARTER PROTECTEUR / CARTER DI PROTEZIONE / CAPERUZA
	83		006800 27400	HAUBE / PROTECTING HOOD / CARTER PROTECTEUR / CARTER DI PROTEZIONE / CAPERUZA	
③ /0-34 1~ mit erhöhter Volumenstrom 1~ with increased volume flow rate 1~ avec débit volume augmentée 1~ con flusso in volume aumentata 1~ con flusso in volume aumentata		5	964233 00000		WINKEL / BRACKET / SUPPORT / SUPPORTO / SOPORTE
		6	945204 00000		SECHSKANTSCHRAUBE / HEX-HEAD SCREW / VIS HEXAGONALE / VITE ESAGONALE / TORNILLO DE CABEZA HEXAGONAL
		7	947102 00000		MUTTER / NUT / ECROU / DADO / TUERCA
		8	742002 40000		KABEL / CABLE / CABLE / CAVO / CABLE
		21	000107 16300		GEHÄUSE / PUMP BODY / CORP DE POMPE / CARCASSA / CARCASA
		82	006802 27400		HAUBE / PROTECTING HOOD / CARTER PROTECTEUR / CARTER DI PROTEZIONE / CAPERUZA
	83		006800 27400	HAUBE / PROTECTING HOOD / CARTER PROTECTEUR / CARTER DI PROTEZIONE / CAPERUZA	

²⁾ variantenabhängige Bauteile / variant-dependent components / composants variante-dependantes / componenti variante-dispendenti / componentes variante-dependientes