



Gebr. Becker GmbH
Hölker Feld 29-31
D-42279 Wuppertal



Ersatzteilliste
Spare parts list
Liste de pièces de rechange
Listino pezzi di ricambio
Lista de piezas de recambio
Lista de peças sobresselentes
Reserveonderdelenlijst
Reservedelsliste
Reservdelslista

Reservedelsliste
Varaosaluettelo
Wykaz części zamiennych
Seznam náhradních dílů
Tartalékalkatrész lista
Κατάλογος ανταλλακτικών
Перечень запасных частей
备用零件目录
スペアパーツリスト


SV 8.400




28000041600 04/2010

<p>SERVICE</p>	 D-42279 Wuppertal www.becker-international.com	No. year XXXX XXXXXXXX	Option
		type SV 8.400-XX	
	frequency	XXXX Hz	
	speed	XXXX min ⁻¹	
	power required	XXXX kW	
	inlet capacity	XXXX m ³ /h	
	pressure +	XXXX mbar	
	vacuum -	XXXX mbar	
	Made in Germany	<input type="radio"/> Germany	

	Service: Tel: +49 (0)202 697-171 Fax: +49 (0)202 64 44 74 E-Mail: info@becker-international.com www.becker-international.com
--	--

Index	Pos.	Bestell Nr.	Beschreibung 
SV 8.400	8	570400 41600	UMBAUSATZ /1⇒ /2 (POS: 64, 104, 181, 182, 183, 185, 187, 188)
	27	000100 41600	GEHÄUSE ¹⁾
	29	911310 00000	DICHTUNGSSCHLAUCH
	30	951707 00000	FEDERSCHEIBE
	31	945337 00000	INNENSECHSKANTSCHRAUBE
	48	947742 00000	PASSFEDER
	49	000600 41600	LAUFRAD
	50	013900 41600	DISTANZBUCHSE
	51	001100 41600	LAGERDECKEL
	53	906625 00000	LAGER
	54	016800 41600	SPANNSCHEIBE
	55	901806 00000	WELLENENDSCHRAUBE
	58	911433 00000	ZWISCHENLEGRING 40x70x0,025
	59	911434 00000	ZWISCHENLEGRING 40x70x0,05
	60	911435 00000	ZWISCHENLEGRING 40x70x0,1
	61	911436 00000	ZWISCHENLEGRING 40x70x0,2
	63	000200 41600	GEHÄUSEDECKEL ¹⁾
	64	951703 00000	FEDERSCHEIBE
	65	945327 00000	INNENSECHSKANTSCHRAUBE
	68	945322 00000	INNENSECHSKANTSCHRAUBE
	101	007400 41600	SCHALLDÄMPFERGEHÄUSE
	102	007600 71000	SIEBROHR
	103	007700 16600	DÄMPFER
	104	907500 41600	DICHTUNG
	105	007800 41600	ANSCHLUSSFLANSCH
	107	949451 00000	UNTERLEGSCHNEIBE
108	003808 94000	ZUGANKERSCHRAUBE	
109	903812 01000	ZUGANKERSCHRAUBEN	
181	907501 41600	DICHTUNG	
182	015500 41600	REDUZIERSTÜCK	
183	005601 41600	DECKEL	
185	005600 41600	DECKEL	
187	945371 00000	INNENSECHSKANTSCHRAUBE	
188	945320 00000	INNENSECHSKANTSCHRAUBE	
201	015100 41600	GERÄTEFUSS	
202	949451 00000	UNTERLEGSCHNEIBE	
203	901813 00000	SCHRAUBE	
204	951906 00000	KABELTÜLLE	
215	741310 10000	GUMMIPUFFER	


Index	Pos.	Bestell Nr.	Beschreibung 
SV 8.400			


Variante	/1-401	MIT FREQUENZUMRICHTER ¹⁾	
	49 403	000601 41600 769302 401100	LAUFRAD FREQUENZUMRICHTER (11,0KW)

Variante	/2-501	SONDERAUSFÜHRUNG ¹⁾	
	27 63	000102 41600 000202 41600	GEHÄUSE GEHÄUSEDECKEL

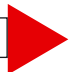
¹⁾ variantenabhängige Bauteile

Zeichnung - siehe Anhang 

Index	Pos.	Ident No.	Description 
SV 8.400	8	570400 41600	CONVERSION SET /1⇒/2 (POS: 64, 104, 181, 182, 183, 185, 187, 188)
	27	000100 41600	PUMP BODY ¹⁾
	29	911310 00000	SEAL
	30	951707 00000	SPRING DISC
	31	945337 00000	SOCKET HEAD SCREW
	48	947742 00000	KEY
	49	000600 41600	IMPELLER
	50	013900 41600	SPACER
	51	001100 41600	BEARING COVER
	53	906625 00000	BALL BEARING
	54	016800 41600	CLAMPING DISC
	55	901806 00000	SHAFT END SCREW
	58	911433 00000	SPACER 40x70x0,025
	59	911434 00000	SPACER 40x70x0,05
	60	911435 00000	SPACER 40x70x0,1
	61	911436 00000	SPACER 40x70x0,2
	63	000200 41600	HOUSING LID ¹⁾
	64	951703 00000	LOCKING WASHER
	65	945327 00000	SOCKET HEAD SCREW
	68	945322 00000	SOCKET HEAD SCREW
	101	007400 41600	SILENCER HOUSING
	102	007600 71000	STRAINER TUBE
	103	007700 16600	SILENCER SPONGE
	104	907500 41600	GASKET
	105	007800 41600	CONNECTING FLANGE
107	949451 00000	WASHER	
108	003808 94000	SCREW	
109	903812 01000	ANCHORING SCREW	
181	907501 41600	GASKET	
182	015500 41600	REDUCING PIECE	
183	005601 41600	COVER	
185	005600 41600	COVER	
187	945371 00000	SOCKET HEAD SCREW	
188	945320 00000	SOCKET HEAD SCREW	
201	015100 41600	FOOT	
202	949451 00000	WASHER	
203	901813 00000	SCREW	
204	951906 00000	RUBBER BUSHING	
215	741310 10000	RUBBER BUFFER	

Index	Pos.	Ident No.	Description 
SV 8.400	Variant		
	/1-401	WITH FREQUENCY INVERTER ¹⁾	
	49 403	000601 41600 769302 401100	IMPELLER FREQUENCY INVERTER (11,0KW)
	Variant		
	/2-501	SPECIAL DESIGN ¹⁾	
	27 63	000102 41600 000202 41600	PUMP BODY HOUSING LID

¹⁾ variant-dependent components

Drawing - see appendix 

Index	Pos.	No. Identification	Designation
SV 8.400	8	570400 41600	ÉQUIPEMENT DE CONVERSION /1⇒ /2 (POS: 64, 104, 181, 182, 183, 185, 187, 188)
	27	000100 41600	CORP DE POMPE ¹⁾
	29	911310 00000	JOINT
	30	951707 00000	DISQUE DE RESSORT
	31	945337 00000	VIS HEXAGONALE INTERNE
	48	947742 00000	CLAVETTE
	49	000600 41600	ROUE
	50	013900 41600	DOUILLE ETANCHEITE
	51	001100 41600	COUVERCLE DE ROULEMENTE
	53	906625 00000	ROULEMENT A BILLES
	54	016800 41600	DISQUE DE SERRAGE
	55	901806 00000	VIS BOUT D'ARBRE
	58	911433 00000	DISQUE AJUSTAGE 40x70x0,025
	59	911434 00000	DISQUE AJUSTAGE 40x70x0,05
	60	911435 00000	DISQUE AJUSTAGE 40x70x0,1
	61	911436 00000	DISQUE AJUSTAGE 40x70x0,2
	63	000200 41600	COUVERCLE ¹⁾
	64	951703 00000	RONDELLE À RESSORT
	65	945327 00000	VIS HEXAGONALE INTERNE
	68	945322 00000	VIS HEXAGONALE INTERNE
	101	007400 41600	CARCASSE SILENCIEUX
	102	007600 71000	GRILLE POUR SILENCIEUX
	103	007700 16600	MOUSSE POUR SILENCIEUX
	104	907500 41600	JOINT
	105	007800 41600	BRIDE DE RACCORDEMENT
107	949451 00000	RONDELLE	
108	003808 94000	VIS	
109	903812 01000	VIS D'ANCRAGE	
181	907501 41600	JOINT	
182	015500 41600	PIECE DE REDUCTION	
183	005601 41600	COUVERCLE	
185	005600 41600	COUVERCLE	
187	945371 00000	VIS HEXAGONALE INTERNE	
188	945320 00000	VIS HEXAGONALE INTERNE	
201	015100 41600	PIED	
202	949451 00000	RONDELLE	
203	901813 00000	VIS	
204	951906 00000	PROTECTION EN CAOUTCHOUC	
215	741310 10000	AMORTISSEUR EN CAOUTCHOUC	

Index	Pos.	No. Identification	Designation
SV 8.400	AVEC CONVERTISSEUR DE FRÉQUENCE ¹⁾		
	49 403	000601 41600 769302 401100	ROUE CONVERTISSEUR DE FRÉQUENCE (11,0KW)

Index	Pos.	No. Identification	Designation
SV 8.400	FABRICATION SPÉCIALE ¹⁾		
	27 63	000102 41600 000202 41600	CORP DE POMPE COUVERCLE

¹⁾ composants variante-dependantes

plan - voir annexe 

Index	Pos.	No. Identificazione	Designazione
SV 8.400	8	570400 41600	LOTTO DI TRASFORMAZIONE /1⇒ /2 (POS: 64, 104, 181, 182, 183, 185, 187, 188)
	27	000100 41600	CARCASSA ¹⁾
	29	911310 00000	GUARNIZIONE
	30	951707 00000	DISCO A MOLLA
	31	945337 00000	VITE ESAGONALE INTERNA
	48	947742 00000	CHIAVETTA
	49	000600 41600	GIRANTE
	50	013900 41600	BOCCOLA
	51	001100 41600	COPERCHIO CUSCINETTO
	53	906625 00000	CUSCINETTO A SFERA
	54	016800 41600	DISCO DI FISSAGGIO
	55	901806 00000	VITE DI CHIUSURA ALBERO
	58	911433 00000	DISCO GIUOCO 40x70x0,025
	59	911434 00000	DISCO GIUOCO 40x70x0,05
	60	911435 00000	DISCO GIUOCO 40x70x0,1
	61	911436 00000	DISCO GIUOCO 40x70x0,2
	63	000200 41600	COPERCHIO ¹⁾
	64	951703 00000	DISCO A MOLLA
	65	945327 00000	VITE ESAGONALE INTERNA
	68	945322 00000	VITE ESAGONALE INTERNA
	101	007400 41600	CARCASSA SILENZIATORE
	102	007600 71000	TUBO-CRIVELLO
	103	007700 16600	MATERIALE PER SILENZIATORE
	104	907500 41600	GUARNIZIONE
	105	007800 41600	FLANGIA DI RACCORDO
	107	949451 00000	RONDELLA
108	003808 94000	VITE	
109	903812 01000	CHIAVARDA D'ANCORAGGIO	
181	907501 41600	GUARNIZIONE	
182	015500 41600	GIUNTO DI RIDUZIONE	
183	005601 41600	COPERCHIO	
185	005600 41600	COPERCHIO	
187	945371 00000	VITE ESAGONALE INTERNA	
188	945320 00000	VITE ESAGONALE INTERNA	
201	015100 41600	PIEDE	
202	949451 00000	RONDELLA	
203	901813 00000	VITE	
204	951906 00000	PROTEZIONE IN GOMMA	
215	741310 10000	AMMORTIZZATORE IN GOMMA	

Index	Pos.	No. Identificazione	Designazione
SV 8.400	CON CONVERTITORE DI FREQUENZA ¹⁾		
	49 403	000601 41600 769302 401100	GIRANTE CONVERTITORE DI FREQUENZA (11,0KW)
SV 8.400	MODELLO SPECIALE ¹⁾		
	27 63	000102 41600 000202 41600	CARCASSA COPERCHIO DELLA CARCASSA

¹⁾ componenti variante-dipendenti

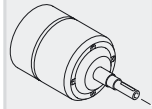
Disegno - vedere allegato

Index	Pos.	No. De pedido	Descripción
SV 8.400	8	570400 41600	EQUIPO PARA LA CONVERSIÓN /1⇒/2 (POS: 64, 104, 181, 182, 183, 185, 187, 188)
	27	000100 41600	CARCASA ¹⁾
	29	911310 00000	MANGUERA DE JUNTA
	30	951707 00000	ARANDELA ELÁSTICA
	31	945337 00000	TORNILLO HEXAGONAL INTERIOR
	48	947742 00000	LENGÜETA DE AJUSTE
	49	000600 41600	RUEDA CORREDERA
	50	013900 41600	CASQUILLO DISTANCIADOR
	51	001100 41600	TAPA DE COJINETE
	53	906625 00000	COJINETE DE RODAMIENTO
	54	016800 41600	ARANDELA TENSORA
	55	901806 00000	TORNILLO TERMINAL DE ÁRBOL
	58	911433 00000	ARANDELA DISTANCIADORA 40x70x0,025
	59	911434 00000	ARANDELA DISTANCIADORA 40x70x0,5
	60	911435 00000	ARANDELA DISTANCIADORA 40x70x0,1
	61	911436 00000	ARANDELA DISTANCIADORA 40x70x0,2
	63	000200 41600	TAPA DE CARCASA ¹⁾
	64	951703 00000	ARANDELA ELÁSTICA
	65	945327 00000	TORNILLO HEXAGONAL INTERIOR
	68	945322 00000	TORNILLO HEXAGONAL INTERIOR
	101	007400 41600	CARCASA DE SILENCIADOR
	102	007600 71000	TUBO DE CRIBA
	103	007700 16600	AMORTIGUADOR
	104	907500 41600	JUNTA
	105	007800 41600	BRIDA DE EMPALME
107	949451 00000	ARANDELA	
108	003808 94000	TORNILLO TIRANTE	
109	903812 01000	TORNILLO DE ANCLAJE	
181	907501 41600	JUNTA	
182	015500 41600	PIEZA DE REDUCCIÓN	
183	005601 41600	TAPA	
185	005600 41600	TAPA	
187	945371 00000	TORNILLO HEXAGONAL INTERIOR	
188	945320 00000	TORNILLO HEXAGONAL INTERIOR	
201	015100 41600	PIE	
202	949451 00000	ARANDELA	
203	901813 00000	TORNILLO	
204	951906 00000	BOQUILLA DE CABLE	
215	741310 10000	AMORTIGUADOR DE GOMA	

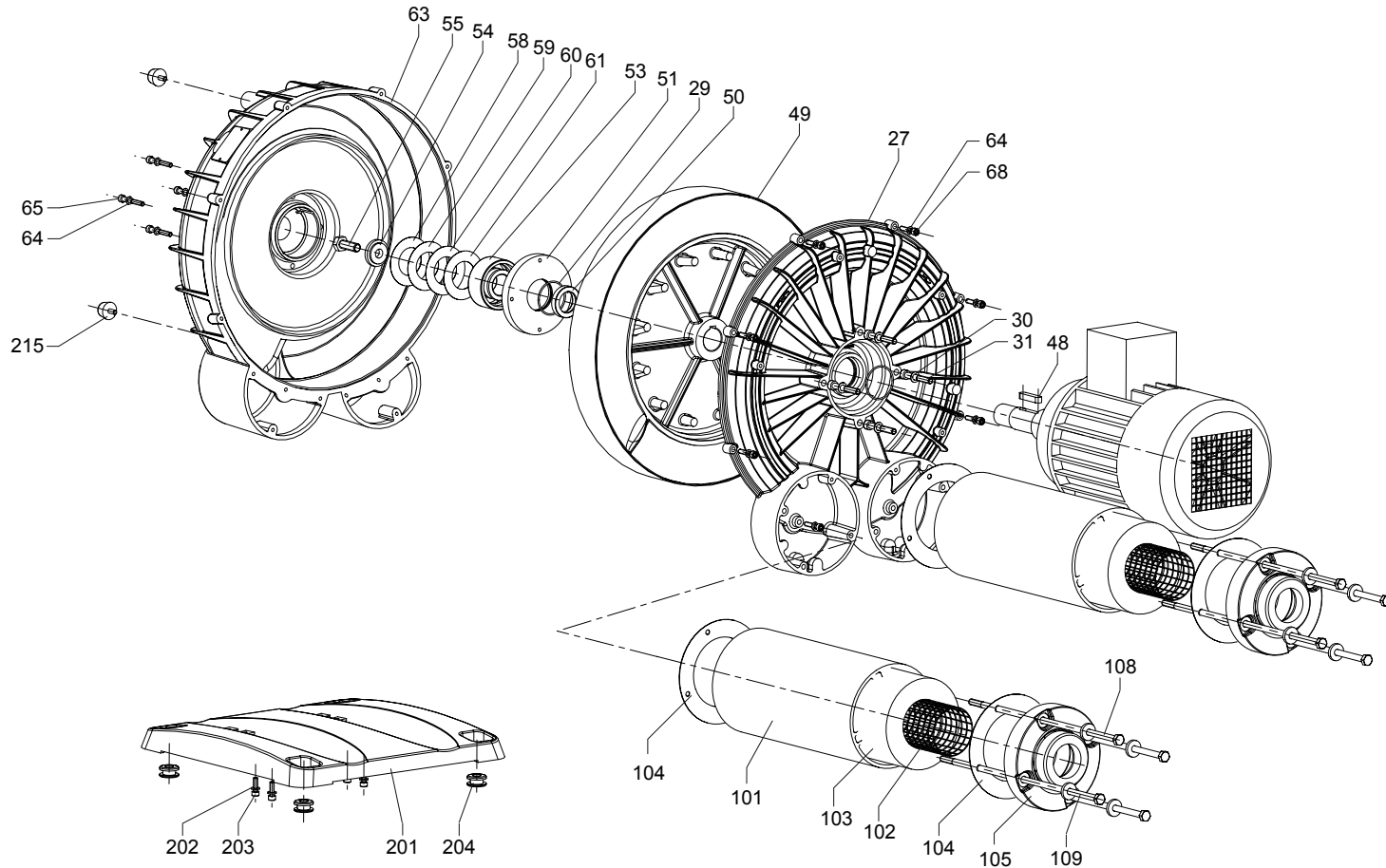
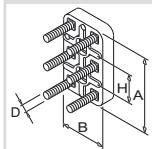
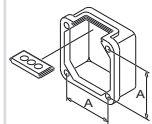
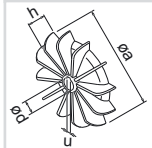
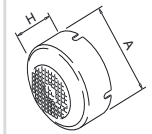
Index	Pos.	No. De pedido	Descripción
SV 8.400	CON CONVERTIDOR DE FRECUENCIA ¹⁾		
	49 403	000601 41600 769302 401100	RUEDA CORREDERA CONVERTIDOR DE FRECUENCIA (11,0KW)
SV 8.400	VERSIÓN ESPECIAL ¹⁾		
	27 63	000102 41600 000202 41600	CARCASA TAPA DE CARCASA

¹⁾ componentes variante-dependientes

Dibujo - véase apéndice



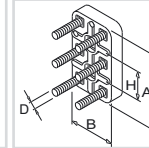
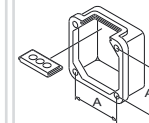
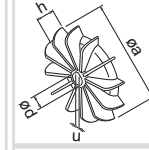
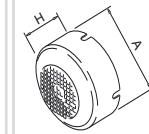
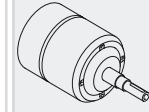
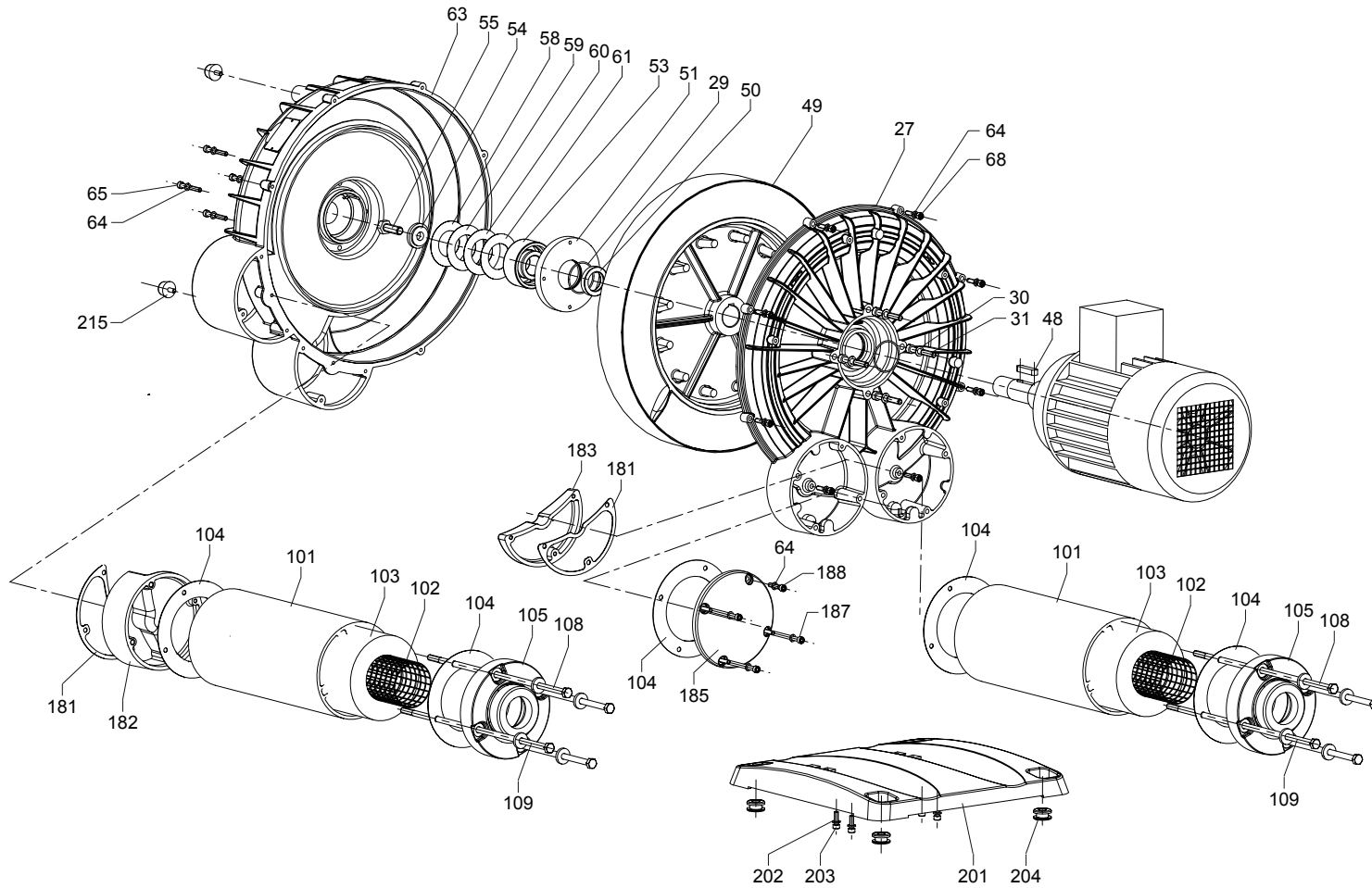
SERVICE ?



SV 8.400/1

SV 8.400/2

SV 8.400/2



SV 8.400/1